



Julien's
AUCTIONS



THE COLLECTION OF THE KING OF POP

Michael Jackson

Antiques, Paintings & Fine Decorative Arts

APRIL 23, 2009







THE COLLECTION OF THE KING OF POP

Michael Jackson

A Once-In-A-Lifetime Auction

Featuring the Personal Property of Michael Jackson

Julien's AUCTIONS

PUBLIC EXHIBITION

BEVERLY HILLS, CALIFORNIA

9900 Wilshire Boulevard, Beverly Hills, California 90210

Adjacent to the Beverly Hilton

April 14 – April 21, 2009

10:00 a.m. – 6:00 p.m. daily

\$20.00 per person for the Exhibition and Auction

Exhibition Designers: WRJ Design Associates, LLC

LIVE AND ONLINE AUCTION

BEVERLY HILLS, CALIFORNIA

9900 Wilshire Boulevard, Beverly Hills, California 90210

Adjacent to the Beverly Hilton

April 22, 2009

Session I: Garden Statuary & Outdoor Furniture

Session II: Furniture & Decorative Arts

April 23, 2009

Session III: Furniture & Decorative Arts

Session IV: Antiques, Paintings & Fine Decorative Arts

April 24, 2009

Session V: Amusements, Arcade Games & Entertainment

Session VI: Amusements, Arcade Games & Entertainment

April 25, 2009

Session VII: Memorabilia from the Life & Career of Michael Jackson

Session VIII: Memorabilia from the Life & Career of Michael Jackson

the
BEVERLY HILTON®

Located adjacent to the site of the Michael Jackson Exhibition and Auction, the Beverly Hilton (awarded the Mobil Four Star for the second consecutive year) is offering special room rates, packages, and VIP private bidding suites. For more information or reservations please visit www.beverlyhilton.com.

NOTE: While some information regarding the condition of property has been included in the lot descriptions in this catalogue, this should in no way be construed as a full disclosure of condition. We urge you to request a full condition report for any lot of interest. To request a detailed condition report of any lot or lots in this catalogue, please email your request (including your contact information) to info@juliensauctions.com.

A portion of the proceeds
of this auction will benefit



MUSICARES®

Live Broadcast By



Auction Network is the live-bid-to-picture interactive auction entertainment network that offers audiences compelling interactive programming which merges the sport and spirit of live auction with the ability to watch, bid and win live, real-time, in H-D from anywhere in the world. Auction Network allows viewers to participate either live or through absentee bidding online at www.auctionnetwork.com



Front row left to right:
 Fran Campione, Darren Julien,
 Martin Nolan, Melanie Newman
 Back row left to right: Alex Saenz,
 Lindsey Karnopp, Megan Mahn,
 Michael Doyle, Hillary Ripps,
 Laura Woolley, Shaan Kokin
 Not pictured: Rebecca Markman,
 Rush Jenkins, Klaus Baer



DARREN JULIEN
 President / CEO, darren@juliensauctions.com

MARTIN J. NOLAN
 Executive Director, martin@juliensauctions.com

MEGAN MAHN
 Director of Special Projects, megan@juliensauctions.com

SHAAN KOKIN
 Creative Director, shaan@juliensauctions.com

HILLARY RIPPS
 Office Manager, hillary@juliensauctions.com

MELANIE NEWMAN
 Accounting, melanie@juliensauctions.com

MICHAEL DOYLE
 Administrator, michael@juliensauctions.com

FRAN CAMPIONE
 Executive Assistant, fran@juliensauctions.com

ALEX SAENZ
 Warehouse Manager, alex@juliensauctions.com

LINDSEY KARNOPP
 Photographer

LAURA WOOLLEY / The Collectors Lab
 Consultant, lwoolley@thecollectorslab.com

REBECCA MARKMAN / Antiques and Fine Art Appraisal Services
 Consultant, antiquesappraiser@cox.net

RUSH JENKINS and KLAUS BAER / WRJ Design Associates, LLC
 Exhibition Designers, wrjassociates@gmail.com

DANIEL KRUSE and KATHLEEN GUZMAN
 Auctioneers

Julien's
 AUCTIONS

P.O. Box 691789
 West Hollywood, California 90069
 Phone: 310-836-1818
 Fax: 310-827-2125
 Email: info@juliensauctions.com
 Web: www.juliensauctions.com
www.juliensauctions.co.uk





THE COLLECTION OF THE KING OF POP

Michael Jackson

Antiques, Paintings & Fine Decorative Arts

LOT 547 – LOT 677



547

547
LORENZO E. GHIGLIERI
(AMERICAN, B. 1931)

"Strongest Bond IV," 1983. From limited edition of 50. Bronze sculpture of a Native American woman nursing a baby.

Height, 20 inches

\$3,000 – 5,000



548

548

ROBERT BURROWS
(BRITISH, 1810–1883)

Landscape with cows, oil on canvas.

No visible signature, relined.

Damage to frame.

30 by 41 inches including frame

\$1,000 – 2,000



549



550

549
19TH CENTURY MAHOGANY
NEOCLASSICAL STYLE
VANITY/WRITING TABLE

Featuring a fitted compartment, a pullout tooled leather writing surface, and a mirrored lift-top lid. Maker's mark: N. Petit. *Some evidence of repair, a missing fitted compartment, and loose top.*

30 by 32 by 19 inches

\$1,000 – 1,500

550
SET OF BUCCELLATI
GILDED STERLING SALT AND
PEPPER SHAKERS

In poppy form, made in Italy, marked.

Length, 7 inches

\$600 – 800

551
PAIR OF ANTIQUE
MAHOGANY WATER URNS

With carved flame finials and lead lined, with bronze spigots. Circa 1790.

25 ½ by 13 inches

\$3,000 – 5,000



551



552



552
19TH CENTURY VANITY CASE
WITH MIRROR

Featuring slant-top upper register enclosing three drawers over a single pullout drawer, floral brasses and escutcheon, and tilting mirror.

26 by 16 ½ by 8 ¾ inches

\$800 – 1,200

553
WILLIAM AND MARY STYLE
FALL FRONT SECRETARY DESK

With double-bonnet top, interior fitted with pullout drawers and pigeonholes, lower case with teardrop pulls and suppressed ball feet.

84 by 40 by 24 inches

\$2,000 – 3,000



553



553, interior



554



554

554
TWO FRAMED VINTAGE
ASIAN TEXTILES

Both depicting birds, one also with polychrome flowers and with gilded thread on gold background, the other gold birds on a gold background.

98 by 20 inches

\$400 – 600

555
HENRI PLE
(FRENCH, 1853–1922)

Gilt-metal art nouveau vase with sinuous female decoration. Signature on body.

Height, 19 ¾ inches; diameter, 14 inches

\$800 – 1,200



555



556



557

**556
ANTIQUE SCOTTISH DOMED
BURLWOOD LETTER BOX**

With brass decorative hardware and fitted interior with blue silk lining.

6 ³/₄ by 9 ¹/₄ by 4 ³/₄ inches

\$200 – 400

**557
WOOD AND BRASS
TUB ON STAND**

With lion's head handles and lead liner, on stand with cabriole legs with pad feet.

22 by 23 by 18 inches

\$200 – 400



558

558

BRONZE FIGURAL GROUP

Carriage with figures and horses, signed "Marchand."

Height, 18 inches

\$2,000 – 3,000

559

**WILLIAM AND MARY STYLE
BURLWOOD SIDE TABLE**

With book-matched veneered top, turned legs, wavy X stretcher, and three pullout drawers with brass hardware.

29 by 30 by 18 ¼ inches

\$400 – 600



559



560

560
AFTER DUCHOISELLE
(FRENCH, 19TH CENTURY)

Bronze Indian maiden in a canoe, signed
"Duchoiselle."

Height, 27 inches

\$1,000 – 1,500



561



561

561

**ETIENNE HENRI DUMAIGE
(FRENCH, 1830–1888)**

Pair of bronze statues, "Avant combat du volontaire 1792" and "Après le combat grenadier 1792," both with dark brown patina on marble bases with title plaques.

Height, 26 inches

\$2,000 – 3,000



562, detail

562
AFTER EDOUARD DROUOT
(FRENCH, 1859–1945)

Bronze statue of a man with an eagle,
 cast after a model by Edouard Drouot,
 with a foundry seal: "CASA VIGNES
 FLORIDA."

33 by 23 inches

\$2,000 – 3,000



562



563

**563
MONUMENTAL CARVED SHIELD-SHAPED MIRROR FRAME**

Featuring an eagle on the crest with scrolling fruit and foliage and animal terminals at the base. Modern mirrored plate. *Splits and separation at joins and where carved in the round.*

68 by 61 inches

\$1,500 – 2,500



564

**564
BUCELLATI GILDED STERLING
MUSHROOM FORM SALT AND
PEPPER SHAKER**

Two stalks in a cluster, made in Italy, marked.

Height, 2 ½ inches

\$400 – 600



565

**565
CHIPPENDALE STYLE
MAHOGANY SIDE TABLE**

With three pullout drawers, reticulated batwing brasses, pierced carved apron decoration, and Marlborough legs. *Some damage to legs.*

30 by 30 ½ by 20 inches

\$600 – 800



566

**566
ANTIQUE TORTOISESHELL
KEEPSAKE BOX**

With ivory border and sterling hardware, paper-lined interior. With key, locking. *Missing some veneer.*

2 1/2 by 7 3/4 by 2 5/8 inches

\$200 – 400



567

**567
THREE-PIECE CERAMIC
FIGURAL CONDIMENT SET**

Comprised of salt and pepper shakers and a mustard pot, three male figurines dressed in Revolutionary-era garb. *Damage to one.*

PROVENANCE Richard Yeakel Antiques, Laguna Beach, Calif.

5 1/2 by 2 1/2 inches

\$100 – 200

**568
ANTIQUE WELSH DRESSER**

With two cabinet doors over three pullout drawers and reticulated carving on gallery and apron. Featuring stringing inlay and burntwood shell decoration. *Evidence of restoration.*

81 by 80 by 18 1/2 inches

\$4,000 – 6,000



568



569

569
ANTIQUE OVAL WINE TABLE

On trestle style base.

29 by 40 by 35 inches

\$400 – 600



570

**570
COMB BACK WINDSOR CHAIR**

With spindle back, bulbous stretcher, and incised carved legs.

40 by 24 ½ by 20 inches

\$200 – 300



571

**571
CONTINUOUS ARM BRACE
BACK WINDSOR CHAIR**

With baluster and ring-turned splayed legs and H stretcher.

39 by 20 inches

\$400 – 600



572



573

572
GEORGIAN STYLE DRESSING BOX

With brass hardware and fitted interior.

10 by 12 by 8 ¼ inches

\$200 – 400

573
DROP-LEAF BREAKFAST TABLE

Oval shaped, with turned legs.

30 by 78 by 24 inches

\$400 – 600



574

**574
EBONY SCEPTER
WITH SILVER MOUNTS**

With engraved decoration and crown finial.

Height, 61 inches; diameter, 4 inches

\$200 – 400



575

**575
WINDSOR BRACE BACK
CONTINUOUS ARMCHAIR**

With incised spindles and turned legs.
Damage to crest.

37 by 19 by 19½ inches

\$200 – 400



576

576
SET OF THREE
LEATHER ARMCHAIRS

With carved knees, ball and claw feet, and leather upholstery attached by nail heads.

40 ½ by 22 by 20 ½ inches

\$1,000 – 1,400

577
PROVINCIAL FRENCH VASSELIER

With a molded cornice over a shaped frieze, three open shelves with turned spindles, lower section with raised panel doors, pierced metal hardware, and cabriole legs with scroll feet.

\$600 – 800



577



578

**578
PAIR OF ORNATE FIGURAL BRASS
FIRE IRONS**

Featuring cherubs on decorative urns
surmounting mythological creatures.

\$400 – 600



579

579

ROCOCO STYLE CARVED MIRROR

In circular form with carved ribbandry and foliate decoration.

34 by 32 inches

\$300 – 500

580

**ROCOCO STYLE
LADIES' VANITY STOOL**

With carved ribbon back and caned seat, on cabriole legs.

36 ½ by 15 ¼ by 15 ¼ inches

\$200 – 300



580





581

581
MONUMENTAL WOODEN
CARVING OF CHICKENS

With rooster and chicks on a rectangular
base.

24 by 52 ½ by 20 inches

\$800 – 1,200



582

582
JACOBAN STYLE
OCCASIONAL TABLE

With pullout drawer, block and turned
legs, and stretchers.

29 by 34 ¼ by 22 ½ inches

\$600 – 800



583

583

WEDGWOOD BLACK BASALT VASE

With raised polychrome children, leaves, butterflies, and flowers. Marked on base.

Height, 10 ½ inches

\$100 – 200



584

584

**LARGE MOUNTED
RAMS HORN INKWELL**

With embossed pewter mounts, raised on a single pad foot.

8 ½ by 11 ¼ inches

\$200 – 400



585



586

585

GRACE SYKES ALPHABET SAMPLER

With animals, flowers, and a large butterfly.

18 by 21 inches including frame

\$300 – 500

586

A 19TH CENTURY EMBROIDERED SAMPLER

With colored border, verse, animals, flowers, and a building. Partially illegible attribution stating "Margaret aged 15..."

33 ¾ by 35 inches including frame

\$400 – 600



587



588

587
ANONYMOUS SCENIC
ALPHABET SAMPLER

With a red brick building, verse, animals, trees, and flowers.

21 ¾ by 24 inches including frame

\$200 – 400

588
ANONYMOUS SCENIC SAMPLER

With geometric border, red school house, trees, animals and flowers.

19 ¼ by 21 inches including frame

\$300 – 500



589

589

JANE BENJAMIN SAMPLER

Depicting a building, animals, trees, and flowers in a cartouche, with silk thread, in a burlwood frame. Dated 1827.

16 ½ by 23 inches including frame

\$400 – 600



590

**590
QUEEN ANNE STYLE LOWBOY**

With stringing inlay, brass hardware, shaped apron, and cabriole legs.

28 by 33 by 19 ½ inches

\$400 – 600



591

**591
ANTIQUE FRENCH
TALLCASE CLOCK**

With enamel dial surmounted by brass decoration. *Not guaranteed to be operational.*

97 ½ by 21 ½ by 11 inches

\$800 – 1,200



592



592, detail

592
ORNATE CANOPY BED

With monogrammed headboard featuring ornately carved scrolling foliage surmounted by a reticulated crest, decorative medallions, and canopy frame.

90 ½ by 72 by 87 ½ inches

\$800 – 1,200



593

593

FOUR-POST CANOPY BED

With spiral-twist posts, decorative medallions, and canopy frame.

82 by 56 by 79 inches

\$400 – 600



594



595

**594
GROUP OF THREE OVAL
BENTWOOD SHAKER BOXES**

One large and two smaller boxes. With finger joints and copper nails. Stains and surface wear. Together with a scalloped edge woven "Ricordo Venezia" box, missing key.

Largest oval box, 3 ¼ by 9 by 6 ¾ inches

\$400 – 600

**595
GEORGE III WINDSOR ARMCHAIR**

Wooden armchair.

39 ½ by 22 by 17 inches

\$300 – 500

**596
QUEEN ANNE STYLE
RECLINING WING CHAIR**

With an adjustable reclining mechanism.

50 ½ by 30 by 35 inches

\$600 – 800



596



597

597
DAVID NORDAHL
(AMERICAN, B. 1941)

"Playmates for a Lonely Child," oil on linen, signed and dated 1990 lower left. Image depicts a little girl with a butterfly and fairies.

41 by 41 inches including frame

\$2,000 – 3,000

598
DOUGLASS CROCKWELL
(AMERICAN, 1904–1968)

"Boy Upside Down," oil on canvas, monogrammed lower left. Label on verso indicates that this image was a *Saturday Evening Post* cover for the April 20, 1940, issue.

20 by 16 ½ inches including frame

\$2,000 – 3,000



598



599

599
VICTORIAN CHEVAL MIRROR
 With brass fittings and ball and claw feet.
 63 ¾ by 31 by 25 ½ inches
 \$600 – 800



600

600
SHELL-FORM CARVED WOODEN SEAT
 With tripod animal paw feet and swiveling base.
 23 by 17 by 19 ½ inches
 \$200 – 400

601
SEMANIER-TYPE CHEST ON STAND
 With shell carving and sinuous curve on the crest, ten graduated drawers in the case, shaped skirt, and cabriole legs on trifold feet.
 73 by 40 by 19 ½ inches
 \$600 – 800



601



602



603

**602
A CONTINENTAL
SCHOOL LANDSCAPE**

Late 19th/early 20th century oil on canvas scene depicting peasant couple near a lake with a verdant mountainous landscape beyond. Unsigned. *Evidence of old restoration.*

38 ½ by 46 inches

\$800 – 1,200

**603
WILLIAM AND MARY
STYLE NIGHTSTAND**

With one pullout drawer with brass hardware, shaped apron, turned legs, and wavy X stretcher.

28 ¼ by 25 ¼ by 18 ½ inches

\$100 – 200

**604
BRUNEL SILVER-PLATED EAGLE**

With partially outstretched wings.

24 by 26 by 22 inches

\$1,500 – 2,500



604



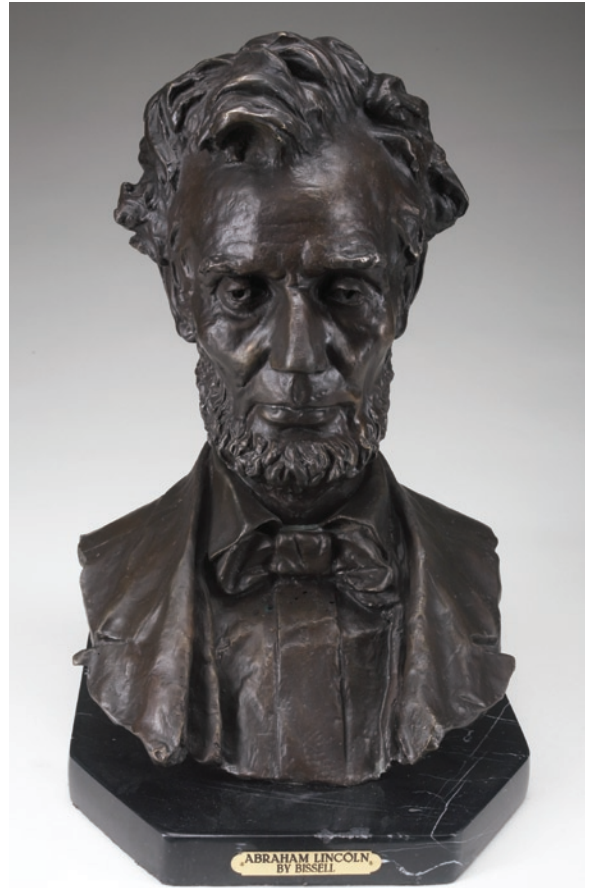
605

**605
GILDED EAGLE LECTERN**

On a circular standard.

Height, 70 1/2 inches

\$600 – 800



606

**606
AFTER GEORGE BISSELL
(AMERICAN, 1839–1920)**

Bronze bust of Abraham Lincoln on a black marble base.

19 by 12 by 12 1/2 inches

\$300 – 500

**607
PHILADELPHIA STYLE HIGHBOY**

Tall chest of drawers made of curly maple with bonnet top, flame finials, cabriole legs. Circa 1790.

81 by 37 by 18 inches

\$3,000 – 5,000



607



608

**608
MINIATURE COMPLETE
SUIT OF ARMOR**

With fabric underlay. Mounted on a wood base.

25 by 12 by 8 inches

\$200 – 400

**609
ANTONIN MERCIÉ
(FRENCH, 1845–1916)**

"Gloria Victis" statue in gold and bronze patina, cast after a model, signed "A. Mercié" on base and titled; also inscribed "Barbedienne."

\$3,000 – 5,000



609



610



611

610

PAIR OF PRICKET STICKS

In wrought iron and patinated bronze, with turned columns on tripod scrolled legs.

64 by 17 ½ inches

\$1,000 – 1,500

611

ROCOCO STYLE WRITING DESK

With three drawers and ornate hardware.

29 ½ by 39 by 23 inches

\$400 – 600



612

**612
GEORGIAN STYLE
ARCHED TOP MIRROR**

In a rosewood frame.

50 by 18 inches

\$200 – 300



613

**613
GEORGIAN STYLE MIRROR
WITH ETCHED GLASS PANEL**

In a wood frame.

37 by 16 ½ inches

\$200 – 300



614

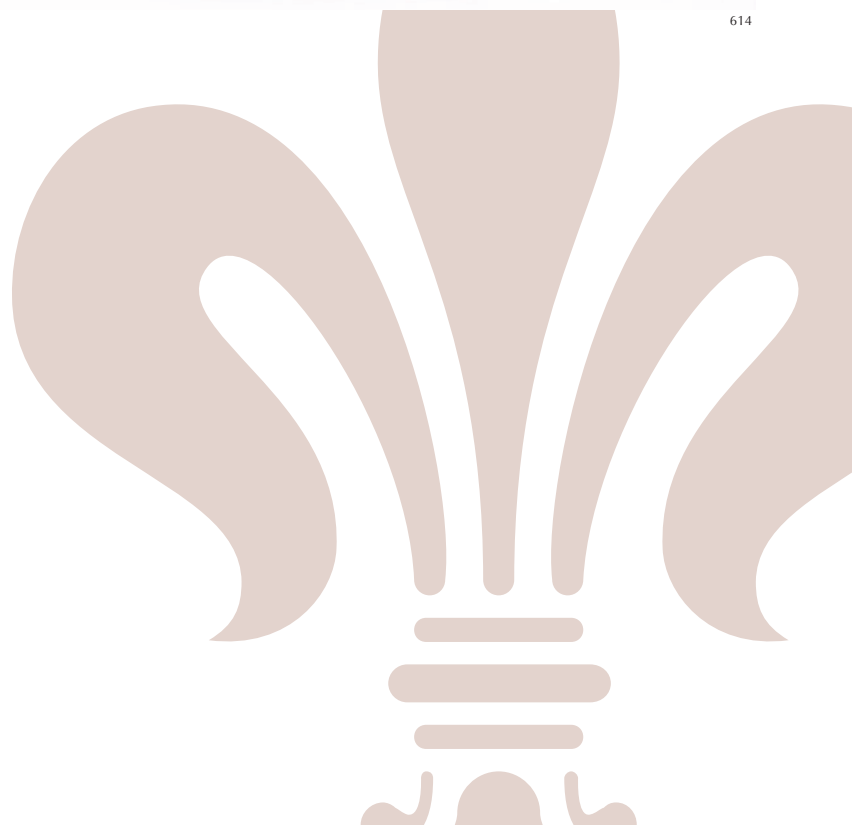
614

ANTIQUE DOUBLE PEDESTAL DESK

With tooled leather top and nine pullout drawers with brass knobs and escutcheons.

29 by 48 by 27 inches

\$600 – 800





615



616

615
HOOP BACK
WINDSOR ARMCHAIR

With pierced backsplat, spindle back, continuous arms, and turned legs and stretchers.

44 by 25 ½ by 19 inches

\$200 – 400

616
A QUEEN ANNE STYLE SIDEBOARD

With three pullout drawers, scalloped apron, and cabriole legs.

35 by 72 by 16 ½ inches

\$600 – 800

617
ANTIQUE BURLWOOD
LETTER BOX

Fitted bird's eye maple interior and intricate engraved brass hardware.

6 ⅛ by 8 ¾ by 4 ⅝ inches

\$200 – 400



617



618



618

618

TWO STAFFORDSHIRE FIGURINES

One of a couple depicting a man playing the flute with a dog at his side, in front of boscage; the other a woman leading a horse with a hair tail.

PROVENANCE Richard Yeakel Antiques, Laguna Beach, Calif.

Tallest height, 11 inches

\$200 – 400



619

619
QUEEN ANNE STYLE
GATELEG TABLE

With pad feet and block turned legs.

28 by 42 ½ by 35 inches

\$600 – 800



620

**620
TWO LIGHT CERAMIC
FIGURAL CANDELABRA**

Modeled as a tree issuing two branches terminating in leaf drip pans and circular candle holders, applied with a maiden on a ladder picking flowers. Marked on the underside with a blue anchor.

13 ¼ by 9 ½ by 5 ½ inches

\$200 – 300

**621
IBACH BABY GRAND PIANO**

With mahogany case, on brass casters, serial number 66814, dating to between 1910 and 1920.

\$4,000 – 6,000



621



622

622
19TH CENTURY ERARD
UPRIGHT PIANO

Featuring ebonized wood with scrolling foliate polychrome enamel and gilt inlay and elaborate ormolu mounts, including seated cherubs at each end of the keyboard; serial number 15652, dates to 1825–1850. Frontal brass plaque reads, “Monbro Ainé. / 18 rue Basse du Rampart.”

45 by 60 by 24 inches

\$10,000 – 15,000



622, detail



622, detail



623, partial

623

**SET OF FOUR VICTORIAN
CARVED WALNUT SIDE CHAIRS**

With elaborate figural, foliate, and floral
carving in the Renaissance Revival style.

47 by 22 by 2 ½ inches

\$400 – 800



624, detail



624

624
VICTORIAN CARVED
WALNUT HALL CHAIR

With elaborate leonine and heraldic carving, pierced openwork on the seat back and stretcher, and upholstered seating.

72 by 36 by 28 inches

\$300 – 500



625

**625
PAIR OF PEDESTAL STANDS**

Bombé shape with ormolu mounts and green marble tops.

59 by 17 inches

\$800 – 1,200

**626
FIGURAL SEVEN LIGHT
CANDELABRAS**

In Neoclassical style, featuring black and partial gilt pedestal bases with hoof feet surmounted by white marble figures supporting cherubs balancing flowering urns on their heads.

122 by 21 ½ by 21 ½ inches

\$2,000 – 3,000



626



627

627
PAIR OF GILT-METAL
CANDELABRAS

Each with a central support issuing four scrolling and one stiff candle arm embraced by a putto.

Approximate height, 28 inches

\$300 – 500

628
PAIR OF GILDED DISPLAY STANDS

Upper section with tapering cabinets on stands (glazed panels lacking) featuring mirror-lined crest pieces surmounted by acorn finials. Table section with baize-covered top surfaces and four gargoyle monopod supports on a black conforming base.

109 by 29 ½ by 29 ½ inches

\$2,000 – 4,000



628





629

629
GILDED-BRASS AND MIRRORED
TABLE PLATEAU

In three sections, with openwork scrolling foliage and multiple figures. *One section has a damaged mirror plate.*

9 1/4 by 61 by 35 inches

\$2,500 – 3,500



630

**630
PAIR OF GILDED CHERUB
THREE LIGHT CANDELABRAS**

Set on shaped rouge marble bases.

18 by 14 by 10 inches

\$300 – 500



631

631
PAIR OF GILDED TEN LIGHT
CANDELABRAS

Featuring cherubs holding flowering
vines.

Height, 53 inches

\$2,000 – 3,000



632



632



633

**632
TWO ORMOLU MOUNTED
FRENCH COMMDES**

With conforming marble tops, double doors opening to interior drawers. *One marble top damaged; one cabinet door damaged.*

38 by 68 by 27 inches

\$2,000 – 4,000

**633
BRONZE AND GILT METAL
FIGURAL MANTEL CLOCK**

With two maidens holding flowering vines from an urn. Enamel dial with black and blue Roman and Arabic numerals signed "JACQUIER HER."

Height, 30 inches

\$1,000 – 2,000



634



635

634

PAIR OF MALACHITE AND GILT METAL NINE LIGHT CANDELABRAS

With elongated urn form, featuring figural mounts with foliage and flowers and dolphin and shell bases.

Height, 62 inches

\$2,500 – 3,500

635

PAIR OF GILT METAL AND MALACHITE CANDELABRAS

With thirteen lights and figural mounts on tripod bases.

Height, 48 inches

\$1,000 – 2,000



636

636
MONUMENTAL OVER-MANTLE
GILDED MIRROR

With architectural style frame featuring columns and a frieze decoration with a central arch. Matte and burnished gilding.

75 by 46 inches

\$800 – 1,200

637
NEOCLASSICAL STYLE
PEDESTAL STAND

With ebonized, inlaid, engraved, and gilded decoration.

42 by 19 ½ by 12 inches

\$600 – 800



637



638



638, detail

638
CARY'S TERRESTRIAL
LIBRARY GLOBE

With brass meridian, in wooden tripod
 floor stand with compass holder.

38 by 21 inches

\$2,000 – 3,000



639, interior



639

639

**CHIPPENDALE STYLE
FALL FRONT SECRETARY DESK**

With molded arched pediment, burlwood fitted interior, leather lined writing surface, shaped skirt, and carved ball and claw front feet.

87 by 42 by 22 inches

\$1,000 – 2,000



640

640
X. RAPHANEL
(FRENCH, 20TH CENTURY)

Bronze statue of a woman in a peasant dress.

25 by 9 ½ inches

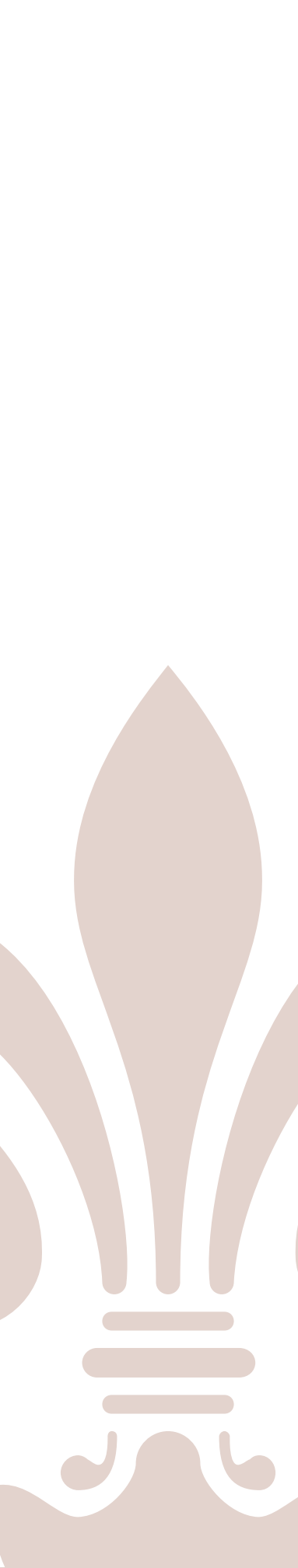
\$400 – 600

641
X. RAPHANEL
(FRENCH, 20TH CENTURY)

Bronze statue of a sailor at the helm.

25 by 11 ½ inches

\$400 – 600



641



642

642

A. BARTELIER

(FRENCH 19TH/20TH CENTURY)

Bronze tiger on a marble base. Signed on base.

14 by 30 by 8 inches

\$600 – 800



643

643

19TH CENTURY CORNER CABINET

With glazed upper cabinet doors, burnt shell decoration, ivory inlaid escutcheons, and wooden lower-cabinet doors.

87 by 49 by 34 inches

\$1,500 – 2,500



644

644

19TH CENTURY LINEN PRESS

With upper cabinet over three drawers with ivory inlaid escutcheons, spiral turned columns, and cast-brass holes.

79 by 21 ½ by 53 ½ inches

\$1,000 – 1,500



645

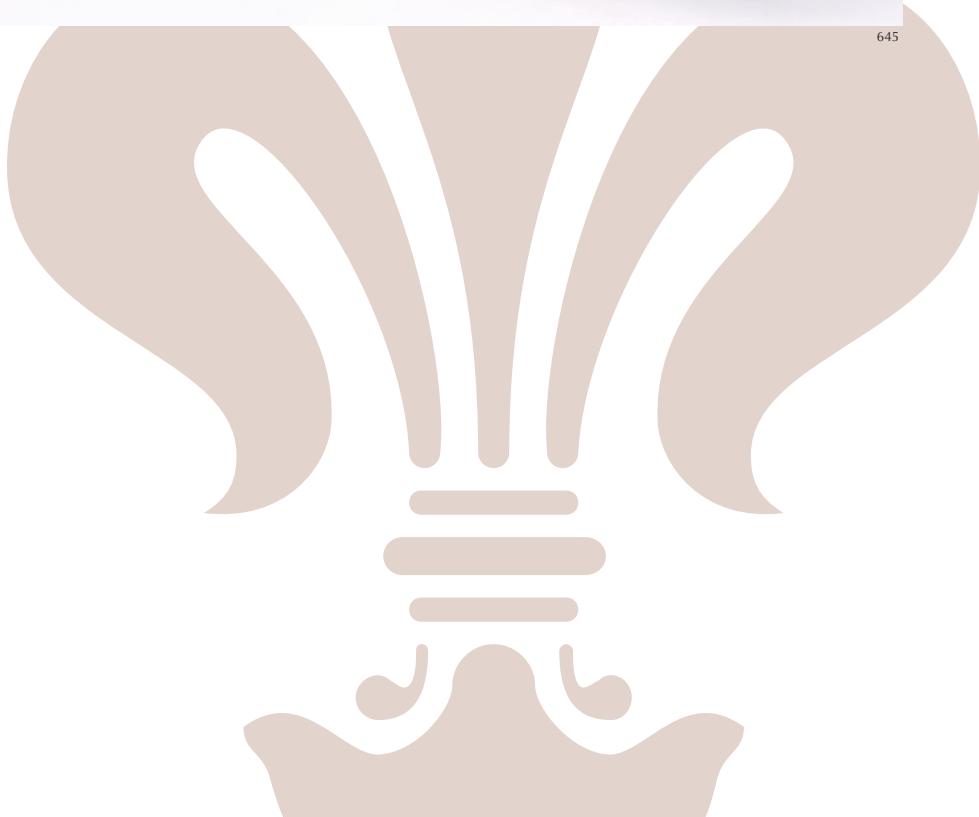
645

ANTIQUE PARTNER'S DESK

With double pedestal base, tooled leather writing surface, and brass knobs on the drawers.

30 by 71 by 41 inches

\$2,000 – 3,000





646

**646
HITCHCOCK STENCIL PAINTED
CHILD'S BENCH**

With green accents and gilded floral
decoration.

28 ¾ by 37 ½ by 15 inches

\$300 – 500



647



648

**647
INLAND PARCELS BRASS
POSTAL SCALE**

With six brass weights and brass scale on wood base. Weight scale, "Inland Parcels Post."

9 1/2 by 15 by 9 inches

\$400 – 600

**648
WOODEN SIDE TABLE**

With one pullout drawer, turned tapered legs, and brass pull knobs.

29 by 36 by 15 1/4 inches

\$200 – 400



649



650

649

HORAZIO GAIGHER
(AUSTRIAN, 1870–1938)

Portrait of an Edwardian boy, oil on canvas, signed center right and dated 1909.

39 ½ by 31 ½ inches including frame

\$2,000 – 3,000

650

JEAN BAPTISTE CARPEAUX
(FRENCH, 1827–1875)

Fisherboy with a shell, dark brown patina, octagonal base, signed Carpeaux.

Height, 36 inches

\$2,000 – 3,000



651

**651
LUCA MADRASSI
(FRENCH, 1848–1919)**

Bronze statue of a cherub with birds at his feet, signed "L. Madrassi" on base.

Height, 39 inches

\$2,000 – 3,000



652

652
ANTIQUE DOUBLE PEDESTAL
SCROLL TOP OAK DESK

Featuring a C-scroll top, fitted interior with tooled and gilded leather writing surface, and cut glass inkwells.

44 by 60 by 36 inches

\$600 – 800



652, detail



653

653

GEORGIAN STYLE GAMES BOX

Card cabinet inscribed "G.L. Jessop. From a few admirers on the stock exchange of his play in the 5th test match, 13 Aug 1902." With compartments for libations, cards, and drawers for chips. Beveled glass, batwing brasses.

14 by 18 by 12 ½ inches

\$800 – 1,200



654



655



656

**654
ANTIQUE IRON
BALANCE SCALE**

With ornately decorated hand. *Missing hanging implements.*

51 by 37 inches

\$600 — 800

**655
FIGURAL MARQUETRY BOX
ON STAND**

Featuring an eagle on the lid and floral sprays and geometric decoration. Interior lined with red velvet.

18 by 21 by 16 1/4 inches

\$400 – 600

**656
WINDSOR ARMCHAIR**

With carved, pierced central slat flanked by spindles under a hoop back, splayed legs, and double H stretcher, circa 1820.

44 by 25 by 26 inches

\$600 – 800



657

657

TIGER OAK VANITY CASE

With brass mountings, fitted velvet lined case, cut glass bottles, and beveled glass panes. *Currently locked, key lacking.*

9 by 9 by 9 inches

\$200 – 400



658

658

YEW WOOD OCCASIONAL TABLE

Featuring rectangular top with canted corners, block and turned legs, and an undertier resting on X-stretcher and turned supports.

29 by 23 by 23 inches

\$400 – 600

659

**PATINAED BRONZE
ART NOUVEAU DECANTER**

Designed by Hans Stoltenberg-Lerche (1867–1920). Inscribed on base "Louchet Ed." Foliate handle, floral rim, and decorated with children.

Height, 9 inches

\$1,000 – 2,000



659



660

**660
PAIR OF STERLING AND JEWELLED
CHARGING KNIGHTS**

Pair of gilt and bronze knights charging on horses. Marked on side of base.

12 by 12 by 4 inches

\$400 – 600



661

**661
PAIR OF GILDED STERLING
AND IVORY COURT FIGURES**

Set of two sterling and vermeil figurines with carved ivory faces and hands. Hallmarked.

This lot will only be shipped domestically.

Tallest, height 16 ½ inches

\$400 – 600

662
STERLING AND IVORY STATUE
OF A KING

Dressed in armor with sword and shield.
Marked on base.

This lot will only be shipped
domestically.

20 by 7 1/2 by 7 1/2 inches

\$400 – 600







663, detail

663
MONUMENTAL VICTORIAN STYLE
MARBLE CLOCK

With carved figures, crested by an eagle.

59 by 79 by 36 inches

\$2,000 – 3,000



664

664

LORENZO E. GHIGLIERI (AMERICAN, B. 1931)

"Eagle," signed on bottom "Lorenzo / Ghiglieri / © 1995 6/10." Patinated bronze with parcel gilding. Depicts a mother eagle landing to feed the babies in her nest. Mounted on a white marble pedestal base.

60 ½ by 49 by 37 inches (excluding base)

\$10,000 – 15,000



664, detail



665, detail



665

665

D. PAUVERT

(FRENCH, 19TH/20TH CENTURY)

"Cleopatra's Last Moments," oil on canvas, signed and dated 1892.

Frame, 86 by 101 inches;
canvas, 71 by 86 inches

PROVENANCE Believed to be lot 96 in Sotheby's New York sale of 19th Century European Paintings and Sculpture held on May 23, 1996.

\$20,000 – 30,000



666, detail

666
MONUMENTAL CARVED MARBLE
FIREPLACE SURROUND

In Renaissance Revival style, with figural caryatids, scenic plaques, and colored inlay panels.

127 by 81 by 23 inches

\$15,000 – 20,000



666



667

667
LORENZO E. GHIGLIERI
(AMERICAN, B. 1931)

"Born to Run," signed "Lorenzo E. Ghiglieri" and dated "1986."

11 by 26 by 10 inches

\$3,000 – 5,000



668

**668
GEORGIAN STYLE
OVAL BREAKFAST TABLE**

With drop leaf top, cabriole legs, carved knees, and trifold feet.

29 by 48 by 45 ½ inches

\$800 – 1,200

**669
PAIR OF MAHOGANY
GENTLEMEN'S CHESTS
(not pictured)**

With pullout surface, lined with green baize, over four pullout drawers. *One chest with cracked rear panel.*

39 by 16 by 32 inches

\$2,000 – 4,000



670



671



672

**670
RUSTIC STYLE FARM
KITCHEN TABLE**

With two pullout drawers featuring iron drop pulls. Legs connected by stretchers.

32 by 75 by 27 inches

\$800 – 1,200

**671
EMBOSSED LEATHER ARMCHAIR**

With all over scrolling foliage pattern, including cranes with snakes, fruits, and flowers.

34 by 22 ½ by 18 inches

\$600 – 800

**672
ANTIQUE CHEST
WITH IRON STRAPWORK**

With lift top and multiple decorative iron bands. 19th century, possibly earlier.

24 ½ by 42 ½ by 24 inches

\$1,000 – 1,500



673



674

673
R. AURILI
(ITALIAN, 19TH CENTURY)
 Bronze statue of Cupid holding a bow and arrow.
 41 by 33 inches
 \$600 – 800

674
GEORGIAN STYLE MAHOGANY
CORNER CHAIR
 Featuring vase splat backs and cabriole legs with pad feet.
 33 by 29 by 25 inches
 \$300 – 500



675

675
WINDSOR ARMCHAIR
 With curved crest rail above a central pierced scrolling splat and spindle supports, with curved arm rests and plank seat, raised on turned legs.
 46 ½ by 26 by 17 ½ inches
 \$300 – 500



676

676
AFFORTUNATO GORY
(FRENCH, 1895–1925)

Marble statue of three dancing cherubs,
 signed "A. Gory Paris."

Height, 39 inches

\$2,000 – 3,000

677
ELABORATELY CARVED STATUE
OF ROMEO AND JULIET

In white marble, in the midst of an
 embrace.

47 by 25 by 22 inches

\$2,000 – 3,000



677

Julien's AUCTIONS

Our sincerest thanks:

the
BEVERLY HILTON®

auction
NETWORK

9900 WILSHIRE
BEVERLY HILLS



NEWBRIDGE
silverware

COBALT  DESIGN



Julien's AUCTIONS

THE COLLECTION OF THE KING OF POP: MICHAEL JACKSON

Sale Dates: Wednesday, April 22 – Saturday, April 25, 2009
9900 Wilshire Boulevard, adjacent to the Beverly Hilton, Beverly Hills, California

BIDDER REGISTRATION FORM

Please check ONE of the following: _____ I will be attending the live auction.
_____ I will be bidding online through Auction Network.
_____ I will be placing absentee bids (not including online).
_____ I will be phone bidding.

Please print legibly.

Name: _____ Company: _____

Tax ID number and related state (if applicable): _____

Email: _____

Address: _____

City: _____ State: _____ ZIP: _____

Day Phone: _____ Cell Phone: _____

Fax: _____ Check here if different billing address: _____

Type of Credit Card: _____ Account Number: _____

Expiration Date: _____ Security Code: _____

Billing address if different than above:

Name: _____

Address: _____

City: _____ State: _____ ZIP: _____

Absentee Bid(s) (mark if applicable): _____

Phone Bid(s) (mark if applicable): _____

Lot #: _____ Bid: _____

Lot #: _____ Bid: _____

Lot #: _____ Bid: _____

Lot #: _____ Bid: _____

Lot #: _____ Bid: _____

Lot #: _____ Bid: _____

Lot #: _____ Bid: _____

Lot #: _____ Bid: _____

Lot #: _____ Bid: _____

Lot #: _____ Bid: _____

Lot #: _____ Bid: _____

Lot #: _____ Bid: _____

BIDDER REGISTRATION FORM continued

The Collection of the King of Pop: Michael Jackson

Payments: Julien's Auctions will invoice only for the property (including buyer's premium). Payments for winning lots should be made to Julien's Auctions, P.O. Box 691789, West Hollywood, California 90069. We accept wire transfer, cashiers check or personal check, MasterCard, Visa, American Express and Discover. California and New York residents will be charged sales tax.

Shipping: Buyer pays all shipping costs: Paid items may be picked up onsite at 9900 Wilshire Boulevard, Beverly Hills, California after the auction through Tuesday, April 28, 2009 at no additional costs. Charlie's Moving Company will be available to make local deliveries for a charge of \$95.00 per hour with a 2-hour minimum per job. There is no insurance available for local deliveries. The buyer agrees that Julien's Auctions will not be responsible for shipping and/or insurance of the property after the auction and they will deal directly with Box Brothers for shipping or Charlie at Charlie's Moving Company at 310-386-6046 for local deliveries in Los Angeles. After April 28, Box Brothers will manage all property to be picked up or shipped to the winning bidders. Please contact their representative Ray Nolasco at 800-369-0497, international calls 310-453-1532 or email: ray@boxbrothers.com. Box Brothers will assess a fee of \$45.00 for up to three lots and \$10.00 for each additional lot, for items picked up after April 28 and before May 15, 2009. After May 15, an \$8.00 per day fee PER LOT will be assessed by Box Brothers to cover storage and insurance for items not picked up or shipped prior to that date. Allow 2-12 weeks from receipt of payment for delivery of each lot dependent on destination and mode of shipment. Timescales and charges can be discussed with Box Brothers prior to the sale. Each lot to be shipped fully insured. Box Brothers will not claim a lower value on a lot to avoid customs on international shipments. The buyer is responsible for all fees including duties, taxes, VAT, customs and other charges for lots shipped.

Acknowledgement: I hereby request approval for this registration to bid in this auction sale with Julien's Auctions (the Auctioneer). I acknowledge that I have read, understood and agreed to the Terms and Conditions of the sale as posted on www.juliensauctions.com and printed in the auction catalogue, applicable to the auction sale for which I now register and request the Auctioneer to approve such registration as an authorized participant as a Floor Bidder (Bidder at live event), Absentee Bidder (Bidder by phone, mail, fax, or online) or Online Bidder. I acknowledge and agree that a **20% Buyer's Premium** will be added to the hammer price on individual lots \$50,000 and higher, and a **25% Buyer's Premium** on all individual lots of \$0 - \$49,000 for which I am the successful bidder. In addition, there will be an additional 3% buyer's premium charged for any lots won on www.auctionnetwork.com. I further acknowledge that I am responsible to pay Julien's Auctions the aggregate of the hammer price and the Buyer's Premium for such lot(s). All invoices must be paid within 10 calendar days after the close of the auction. I authorize Julien's Auctions to charge my credit card (3% commission will be added) listed on page 1 for all items purchased (including shipping) at this auction, and any future Julien's Auctions I may participate in, if not otherwise paid in full within 10 calendar days after the close of the auction. In addition, I understand that my credit card will be charged a fee of \$25.00 for my bidder registration in advance of the auction. By signing below I confirm that I have read and agree with all the facts stated in this Acknowledgement and verify all information on page one is correct.

Signature: _____ Date: _____

Print Name: _____

Company (if applicable): _____ Title: _____

Representations, Warranties and Personal Guarantee: I hereby represent and warrant that I am authorized by the above named Company, Person or Entity, as the case may be (the "Customer"), to place bids and to contract on behalf of the Customer for the purchase of the lots in this auction sale and to receive any such lots on behalf of the Customer. I hereby irrevocably and unconditionally personally guarantee and promise to pay Julien's Auctions on demand the full purchase amount and expressly waive protest, presentment, diligence, demand or notice of any kind. I understand that Julien's Auctions will rely upon these representations, warranties and guarantee in registering me to bid and/or extending me credit or other consideration in connection with this auction sale.

Signature: _____ Date: _____

Do not put title

Please fax completed forms to 310-827-2125.

Forms must be received by 12:00 p.m. (Noon) Pacific Standard Time
on the day prior to the auction day in order to be guaranteed.

Julien's Auctions • P.O. Box 691789, West Hollywood, California 90069
Phone 310-836-1818 • Fax 310-827-2125 • Email info@juliensauctions.com

Terms and Conditions of Sale

Julien's Auctions guarantees the authenticity of Attribution of property listed in the catalogue or online as stated in the Terms of Guarantee. Except for the Limited Warranty contained in the terms of guarantee all property is sold "As Is." We make no warranties, nor does the consignor, as to the merchantability or fitness for a particular purpose, the correctness of the catalogue or other description of the physical condition, size, quality, rarity, importance, medium, provenance, exhibitions, literature or historical relevance of any property. No oral or written statements made in the catalogue, online listing, advertisement, bill of sale, and announcement or elsewhere made by employees (including affiliated and related companies) shall be considered a warranty. We and the Consignor make no representations and warranties, express or implied, as to whether the purchaser acquires any copyrights, including but not limited to, any reproduction rights of any property. We and the Consignor are not responsible for errors and omissions in the catalogue, online listings or any other supplemental material.

It is the responsibility of prospective bidders of live auctions to inspect the property before bidding to determine its condition, size, and to determine if it has been repaired or restored.

Acknowledgement: I hereby request approval for this registration to bid in this auction sale with Julien's Auctions (the Auctioneer). I acknowledge that I have read, understood and agreed to the Terms and Conditions of the sale as posted on www.juliensauctions.com and printed in the auction catalogue, applicable to the auction sale for which I now register and request the Auctioneer to approve such registration as an authorized participant as a Floor Bidder (Bidder at live event), Absentee Bidder (Bidder by phone, mail, fax, or online) or Online Bidder. I acknowledge and agree that a **20% Buyer's Premium** will be added to the hammer price on individual lots \$50,000 and higher, and a **25% Buyer's Premium** on all individual lots of \$0 – \$49,000 for which I am the successful bidder. In addition, there will be an additional 3% buyer's premium charged for any lots won on www.auctionnetwork.com. I further acknowledge that I am responsible to pay Julien's Auctions the aggregate of the hammer price and the Buyer's Premium for such lot(s). All invoices must be paid within 10 calendar days after the close of the auction. I authorize Julien's Auctions to charge my credit card (3% commission will be added) listed on page 1 for all items purchased (including shipping) at this auction, and any future Julien's Auctions I may participate in, if not otherwise paid in full within 10 calendar days after the close of the auction. In addition, I understand that my credit card will be charged a fee of \$25.00 for my bidder registration in advance of the auction. By signing below I confirm that I have read and agree with all the facts stated in this Acknowledgement and verify all information on page one is correct.

Payments: Julien's Auctions will invoice only for the property (including buyer's premium). Payments for winning lots should be made to Julien's Auctions, P.O. Box 691789, West Hollywood, California 90069. We accept wire transfer, cashier's check or personal check, MasterCard, Visa, American Express and Discover. Please note that Julien's will assess a 3% commission for all credit card payments. California and New York residents will be charged sales tax.

Shipping: Buyer pays all shipping costs: Paid items may be picked up onsite at 9900 Wilshire Boulevard, Beverly Hills, California after the auction through Tuesday, April 28, 2009 at no additional costs. Charlie's Moving Company will be available to make local deliveries for a charge of \$95.00 per hour with a 2 hour minimum per job. There is no insurance available for local deliveries. The buyer agrees that Julien's Auctions will not be responsible for shipping and/or insurance of the property after the auction and they will deal directly with Box Brothers for shipping or Charlie at Charlie's Moving Company at 310-386-6046 for local deliveries in Los Angeles.

After April 28, Box Brothers will manage all property to be picked up or shipped to the winning bidders. Please contact their representative Ray Nolasco at 800-369-0497, international calls 310-453-1532 or email: ray@boxbros.com. Box Brothers will assess a fee of \$45.00 for up to three lots and \$10.00 for each additional lot, for items picked up after April 28 and before May 15, 2009. After May 15, an \$8.00 per day fee PER LOT will be assessed by Box Brothers to

cover storage and insurance for items not picked up or shipped prior to that date. Allow 2–12 weeks from receipt of payment for delivery of each lot dependent on destination and mode of shipment. Timescales and charges can be discussed with Box Brothers prior to the sale. Each lot to be shipped fully insured. Box Brothers will not claim a lower value on a lot to avoid customs on international shipments. The buyer is responsible for all fees including duties, taxes, VAT, customs and other charges for lots shipped.

Bids will not be accepted from those persons under the age of eighteen (18) without written consent of said persons parent or legal guardian. Written consent must acknowledge the terms and conditions of sale. This written consent constitutes an agreement to be bound thereby on behalf of the bidder.

Bidder registration is required for all persons wishing to bid live and online for Julien's Auctions. Any person registering for the auction in person or online will complete a registration or bid sheet.

All items are offered subject to a reserve. The reserve is the confidential minimum price acceptable to the Consignor. During a live auction the auctioneer may open any lot by bidding on behalf of the Consignor and may bid up to the amount of the reserve, by placing successive or consecutive bids for a lot or bids in response to other bidders. Online sales may do the same by employing the use of a starting bid which will commence bidding at or below the reserve price agreed to by the Consignor.

Julien's reserves the right to withdraw any property before the sale and will have no liability for doing so.

We reserve the right to accept or decline any bid. Bids must be for an entire lot and each lot constitutes a separate sale. All bids are per lot unless otherwise announced at a live sale by the auctioneer. Live auction lots will be sold in their numbered sequence unless the Auctioneer directs otherwise. It is unlawful and illegal for Bidders to collude, pool, or agree with another Bidder to pay less than the fair value for lot(s). Bidders participating in both live and online auctions acknowledge that the law provides for substantial penalties in the form of treble damages and attorneys' fees and costs for those who violate these provisions. For live auctions the auctioneer will have final discretion in the event that any dispute should arise between bidders. The auctioneer will determine the successful bidder, cancel the sale, or re-offer and resell the lot or lots in dispute. Julien's will have final discretion to resolve any disputes arising after the sale and in online auctions. If any dispute arises our sale record is conclusive. Julien's will execute order or absentee bids, and accept telephone bids as a courtesy to clients who are unable to attend the live auctions. Therefore we take no responsibility for any errors or omissions in connection with this service.

Subject to fulfillment of all of the conditions set forth herein, on the fall of the auctioneer's hammer, title to the offered lot will pass to the highest bidder acknowledged by the auctioneer, and such bidder thereupon (a) assumes full risk and responsibility (including without limitation, liability for or damage to frames or glass covering prints, paintings, photos, or other works), and (b) will immediately pay the full purchase price or such part as we may require. In addition to other remedies available to us by law, we reserve the right to impose from the date of sale a late charge of 1½% per month of the total purchase price if payment is not made in accordance with the conditions set forth herein. All property must be removed from either our premises by the purchaser at his expense not later than 10 business days following its sale and if it is not so removed, (i) a handling charge of 1% of the total purchase price per month from the tenth day after the sale until its removal will be payable to us by the purchaser, with a minimum of 5% of the total purchase price for any property not so removed within 60 days after the sale, and (ii) we may send the purchased property to a public warehouse for the account, at the risk and expense of the purchaser.

If any applicable conditions herein are not complied with the purchaser will be in default and in addition to any and all other remedies available to us and the Consignor by law, including, without limitation, the right to hold the purchaser liable for the total purchase price, including all fees, charges and expenses more fully set forth herein, we, at our option, may (a) cancel the sale of that, or any other lots sold to the defaulting purchaser at the same or any other auction, retaining as liquidated damages all payments made by the purchaser,

or (b) resell the purchased property, whether at public auction or by private sale, or (c) effect any combination thereof. In any case, the purchaser will be liable for any deficiency, any and all costs, handling charges, late charges, expenses of both sales, our commissions on both sales at our regular rates, legal fees and expenses, collection fees and incidental damages. We may, in our sole discretion, apply any proceeds of sale then due or thereafter becoming due to the purchaser from us or any affiliated company, or any payment made by the purchaser to us or any affiliated company, where or not intended to reduce the purchaser's obligations with respect to the unpaid lot or lots, to the deficiency and any other amounts due to us or any affiliated companies. In addition, a defaulting purchaser will be deemed to have granted and assigned to us and our affiliated companies, a continuing security interest of first priority in any property or money of our owing to such purchaser in our possession or in the possession of any of our affiliated companies, and we may retain and apply such property or money as collateral security for the obligations due to us or to any affiliated company of ours. Payment will not be deemed to have been made in full until we have collected good funds. In the event the purchaser fails to pay any or all of the total purchase price for any lot and Julien's elects to pay the Consignor any portion of the sale proceeds, the purchaser acknowledges that Julien's shall have all of the rights of the Consignor to pursue the purchaser for any amounts paid to the consignor, whether at law, in equity, or under these Conditions of Sale.

Under no circumstance will Julien's incur liability to a purchaser in excess of the purchase price actually paid.

The terms and conditions of sale herein described shall be enforced in accordance with, and governed by the laws of the State of California. Bidder acknowledges and agrees that the courts of the state of California shall have exclusive jurisdiction over any dispute(s). Bidder (in person, by agent, order bid, telephone, internet or by other means) agrees that any dispute arising shall be litigated exclusively in the courts of the State of California. Further, venue shall be in the Superior Court of Los Angeles County, in the state of California.

Terms of Guarantee

"Attribution" is defined by Julien's as the creator, period, culture, source of origin, as the case may be as set forth in the Bold Type Heading of a lot in a live auction catalogue or the lot Title of an online auction, as amended by any oral or written salesroom notices and announcements or online notices and announcements. We make no warranties to information not contained in an online lot heading or information not contained in the Bold Type Heading of any live auction catalogue subject to the exclusions listed below.

Julien's warrants the "Attribution," as defined above and subject to the exclusions listed below, of a lot for a period of five years from the date of sale and only to the original purchaser on record at the auction. If it is determined to our satisfaction that the "Attribution" is incorrect, the sale will be rescinded if the lot is returned to the Julien's Auctions warehouse facility in the same condition in which it was at the time of sale. In order to satisfy Julien's that the "Attribution" of a lot is indeed incorrect we reserve the right to require the purchaser to obtain, at the purchaser's expense, the opinion of two experts in the field, mutually acceptable to Julien's and the purchaser, before we agree to rescind the sale under the warranty. This warranty is not assignable and applies only to the original purchaser on record with Julien's. This warranty does not transfer to any subsequent owners of any purchased property (this includes without limitation, heirs, successors, beneficiaries or assigns).

Should a sale be rescinded and the purchase price paid (final successful bid price, plus the buyer's premium), it is specifically understood that this will be considered the sole remedy. It is exclusive and in lieu of any other remedy available as a matter of law, or in equity.

Exclusions will be made and this warranty does not apply to "Attribution" which on the date of sale was in accordance with the then generally accepted opinion of scholars and specialists, or the identification of periods or dates of execution which may be proven inaccurate by means of scientific processes not generally accepted for use until after publication of the catalogue or listing online, or which were unreasonably expensive or impractical to employ.







Julien's AUCTIONS

P.O. Box 691789, West Hollywood, California 90069

Phone: 310-836-1818 • Fax: 310-827-2125

Email: info@juliensauctions.com

Web: www.juliensauctions.com

www.juliensauctions.co.uk

Above, Lot 622, 19th Century Erard Upright Piano